



2005 Beginning College Survey of Student Engagement

Summary of Results

Daniel Petra, EdD
Office of Assessment & Institutional Research
Morningside College



Background

- First time Morningside has participated in the Beginning College Survey of Student Engagement (BCSSE)
- The BCSSE is being piloted by Indiana University and was free to colleges administering the NSSE during the 2005-06 academic year
- Students' BCSSE results will be compared to their NSSE results



Methodology

- All students enrolled in Fall 2005 Passport courses sections were asked to participate
- Surveys were handed out during course and returned to OAIR by instructors.
- Completed surveys were returned to Indiana University for processing and our results were received in Spring 2006
- Individual student advising reports were provided to the Dean of Advising



In this Summary

- Passport enrolled students only
- Information on:
 - Student Characteristics
 - High School Experience
 - College Expectations



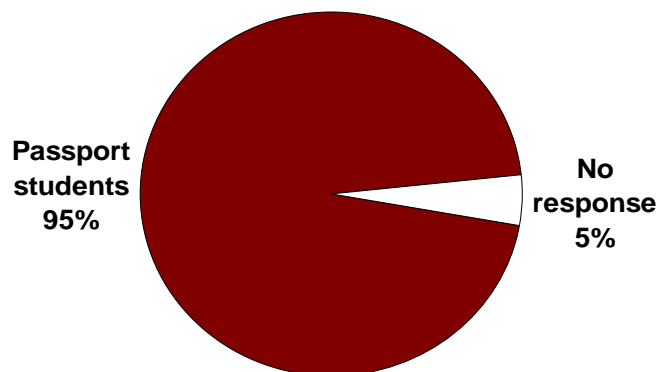
Be ready to answer:

- What was surprising?
- What was worrisome?
- What are some specific ways that we can use this information to improve the Morningside experience?



Response Rate

308 students surveyed; 294 responded

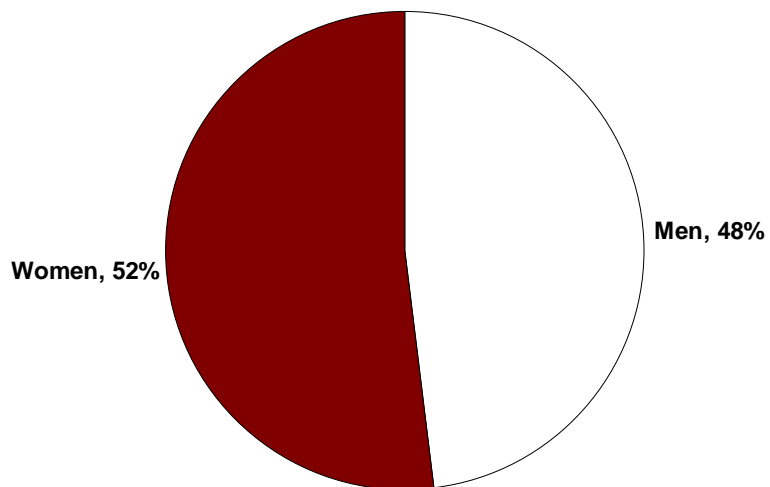




Student Characteristics

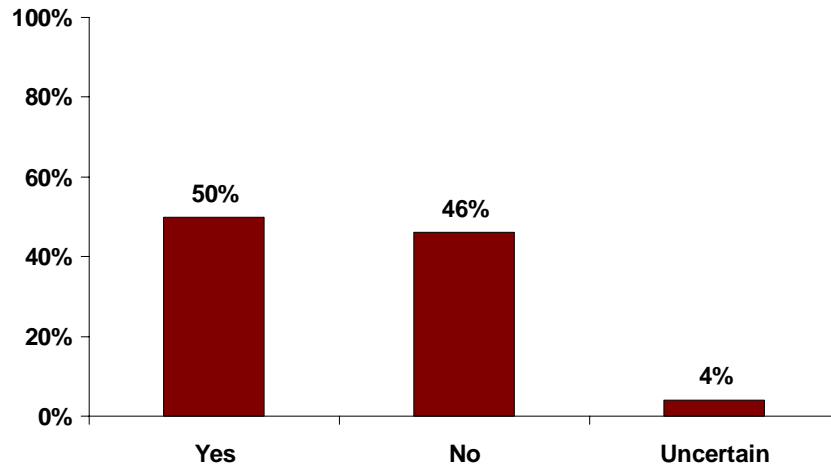


Sex of Respondents

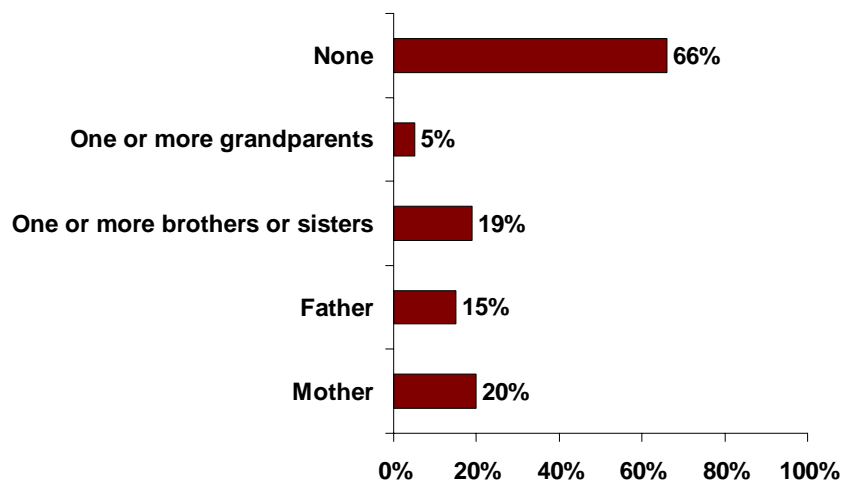




Did at least one of your parents or legal guardians complete a four-year college degree or more?

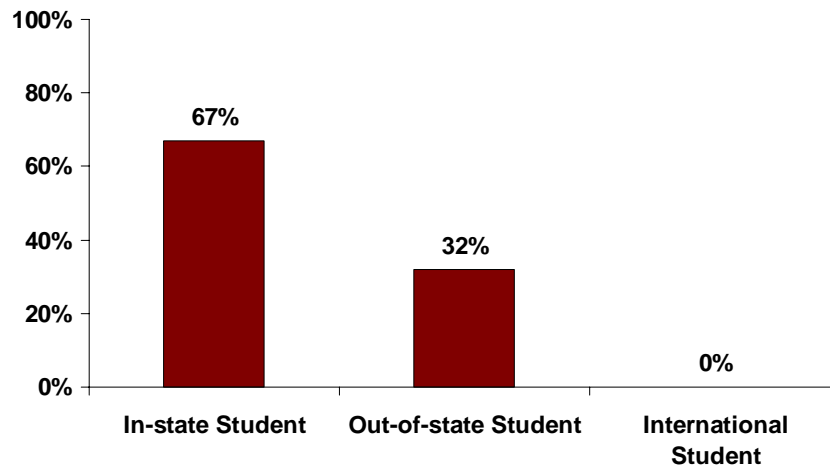


Percent of respondents with family members who are or have attended Morningside College

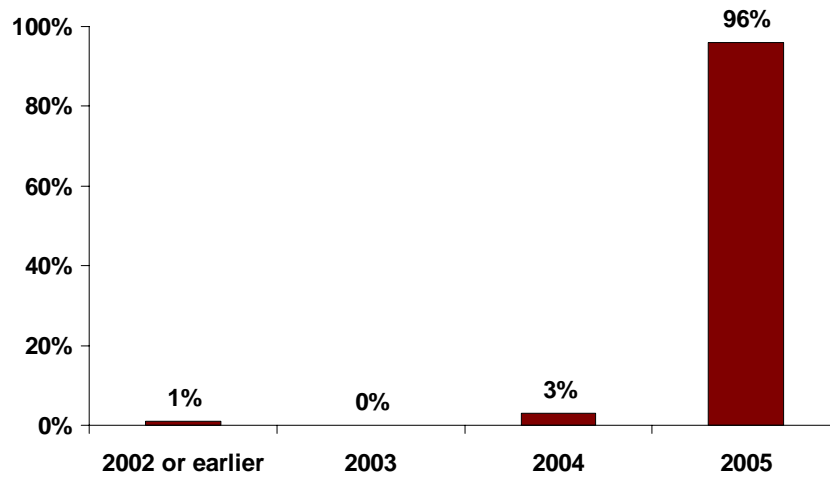




State of Residence

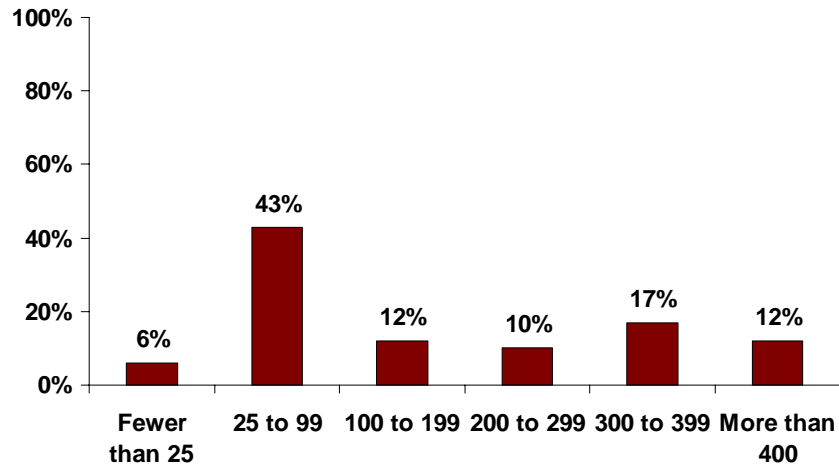


Year of High School Graduation

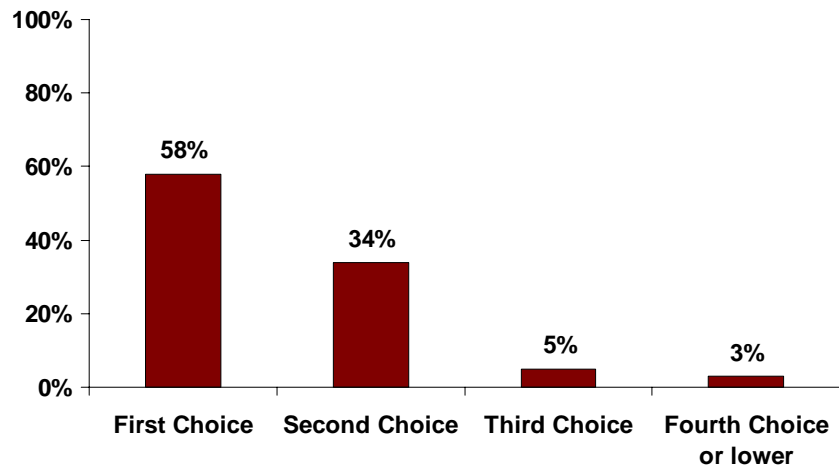




Size of HS Graduating Class

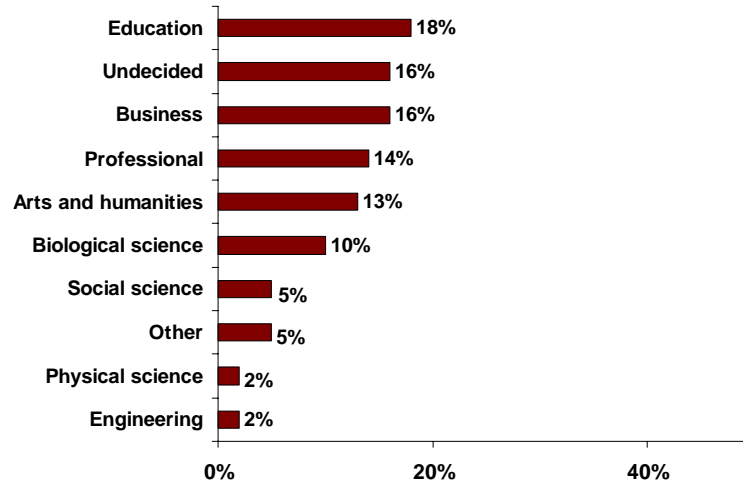


At the time they applied for admission, Morningside College was their:





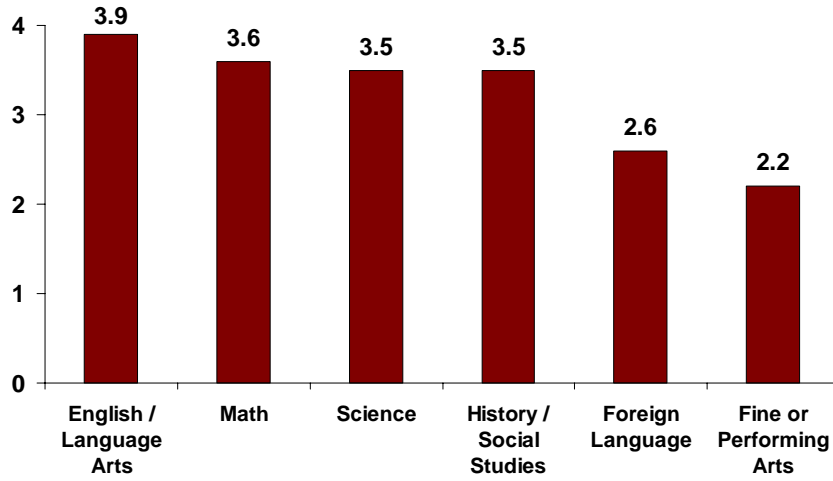
Anticipated College Major



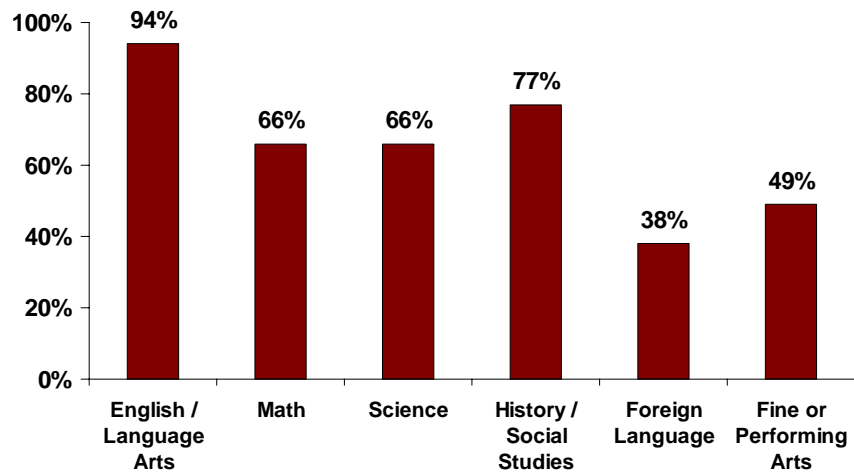
High School Experiences



Average Number of Years of HS Coursework Completed within Subject Area

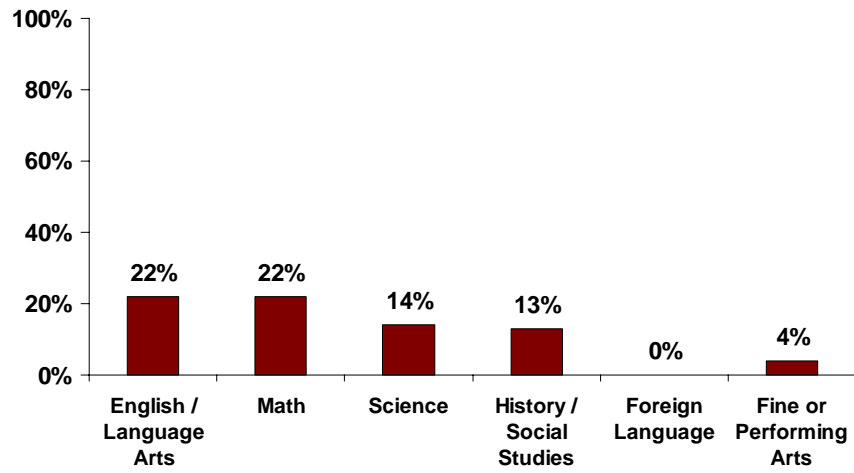


Percentage of Students Taking Coursework During Senior Year by Subject Area

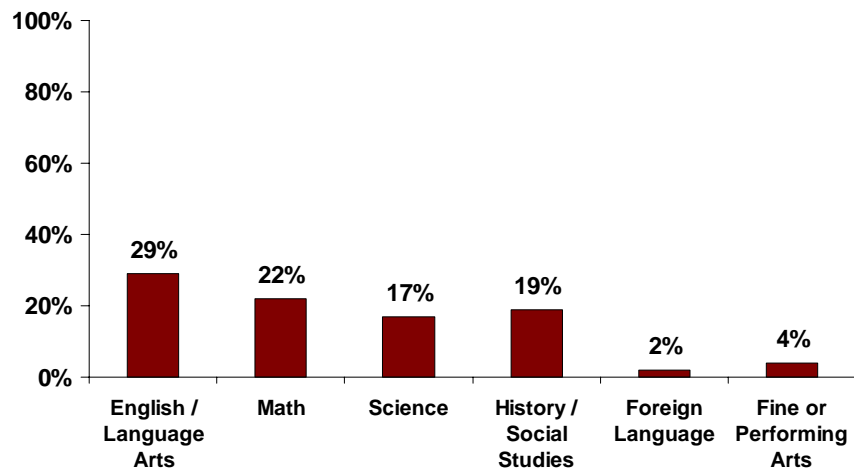




Percentage of Students Taking AP Coursework in HS by Subject Area

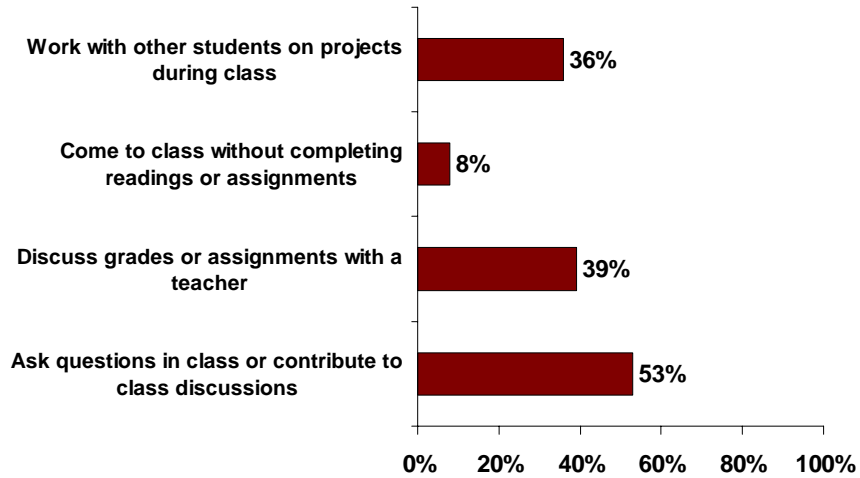


Percentage of Students Taking College Coursework in HS by Subject Area

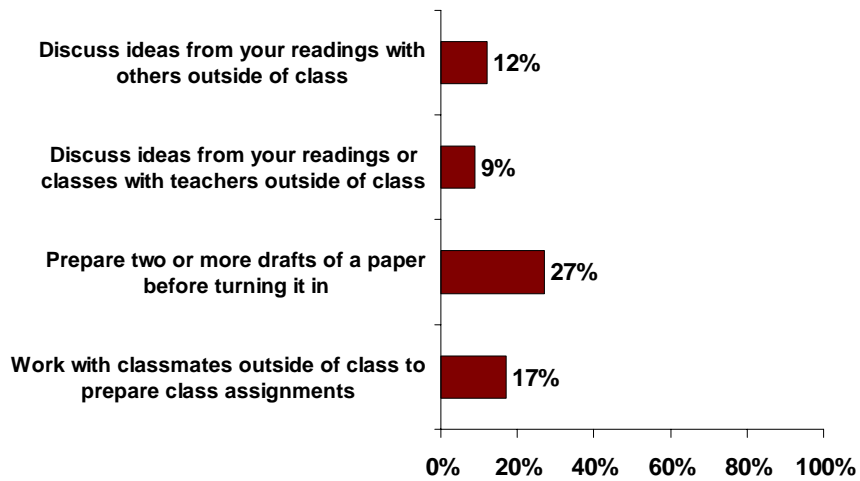




Student Involvement in Academic Practices During Last Year of HS: Very Involved (5 or 6 / 6)

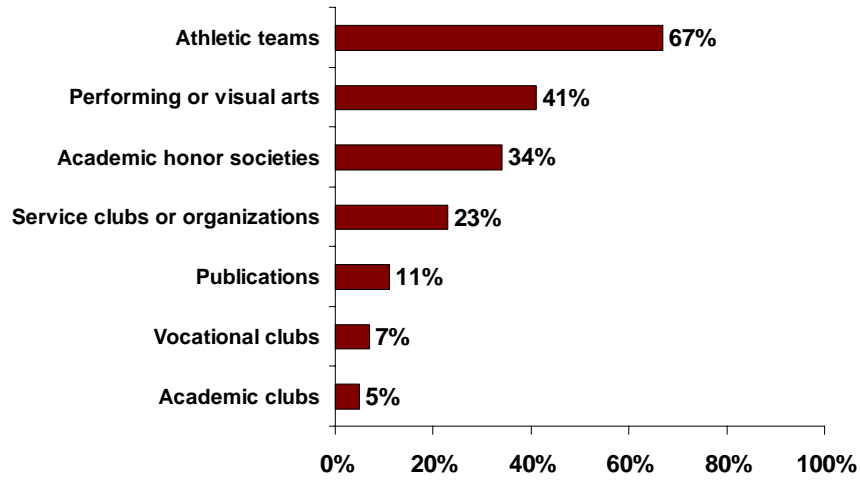


Student Involvement in Academic Practices During Last Year in HS: Very Involved (5 or 6 / 6)

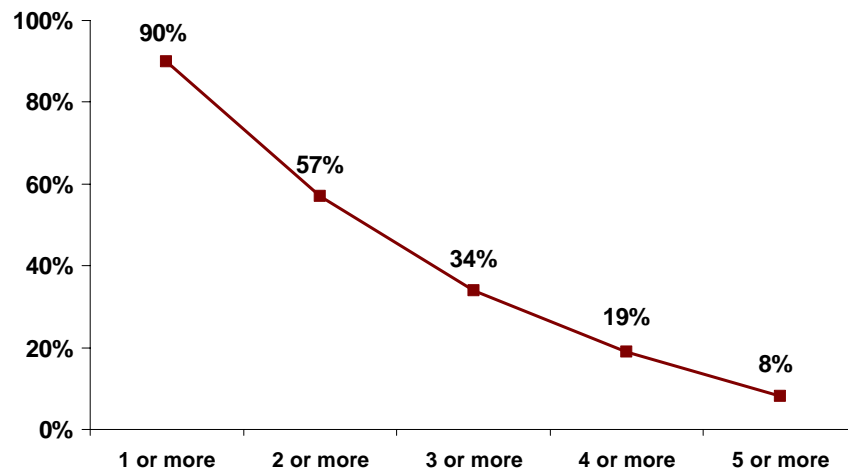




Student Involvement in Extracurricular Activities During Last Year in HS: Very Involved (5 or 6 / 6)

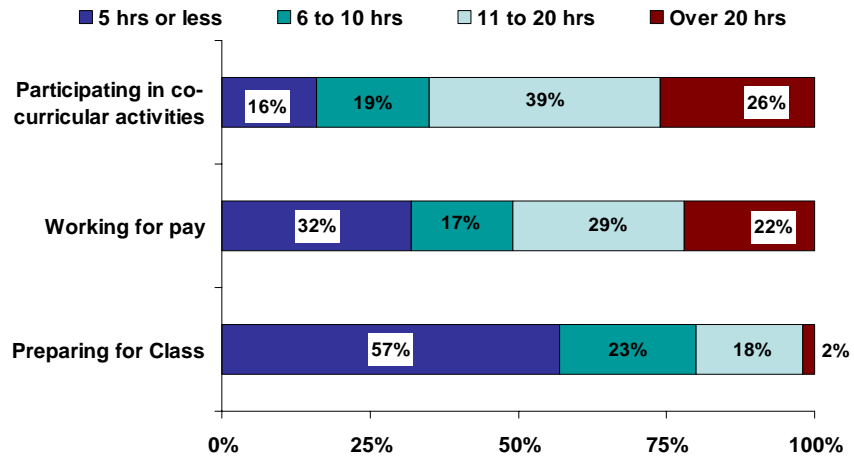


Percentage of Students Very Involved (5 or 6 / 6) in Multiple Extracurricular Activities

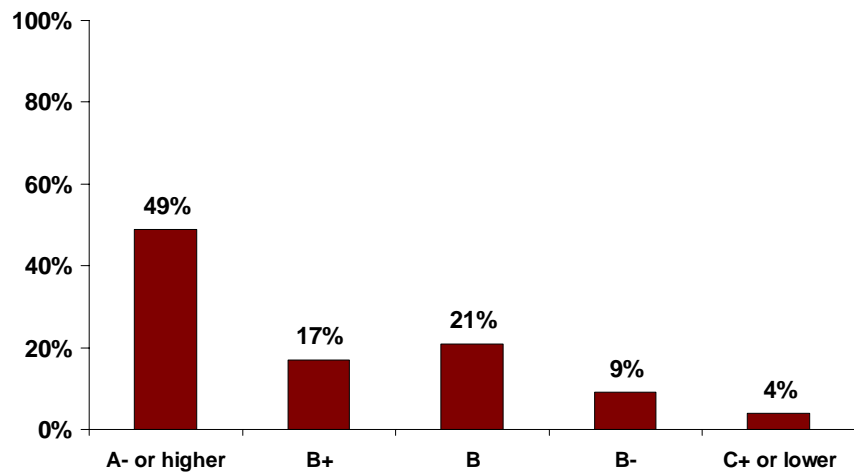




Amount of Time Spent During a Typical 7-Day Week During Last Year in High School



“What were most of your high school grades?”

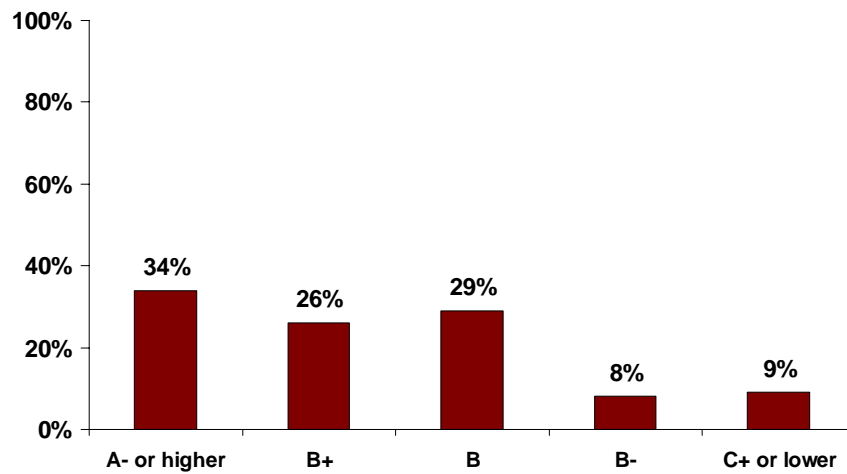




College Expectations

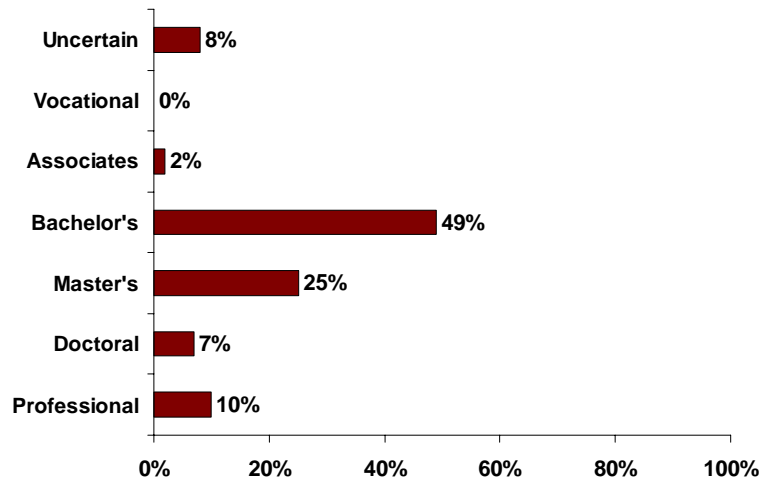


“What do you expect most of your grades will be at this college during the coming year?”

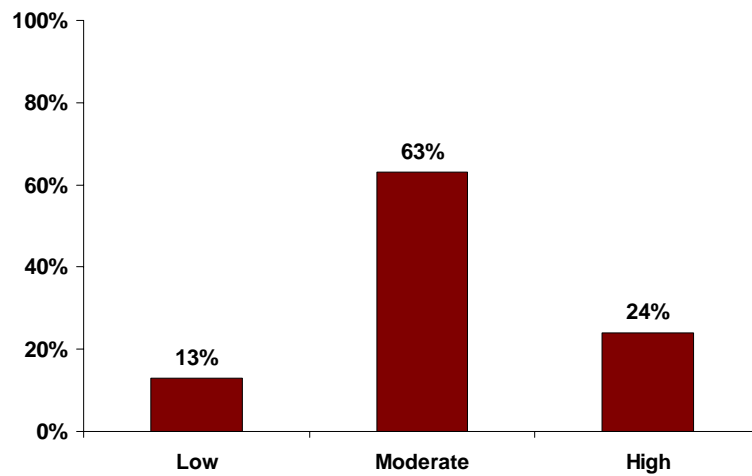




Expected Highest Academic Degree Intending to Obtain at any College

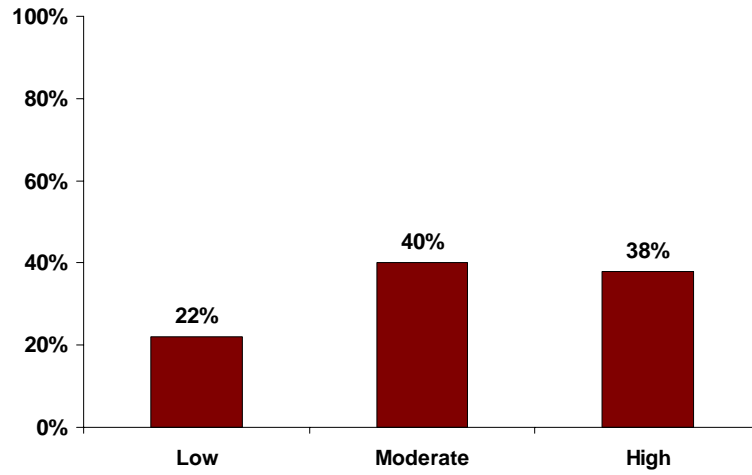


Expected Level of Difficulty in College: Managing your time

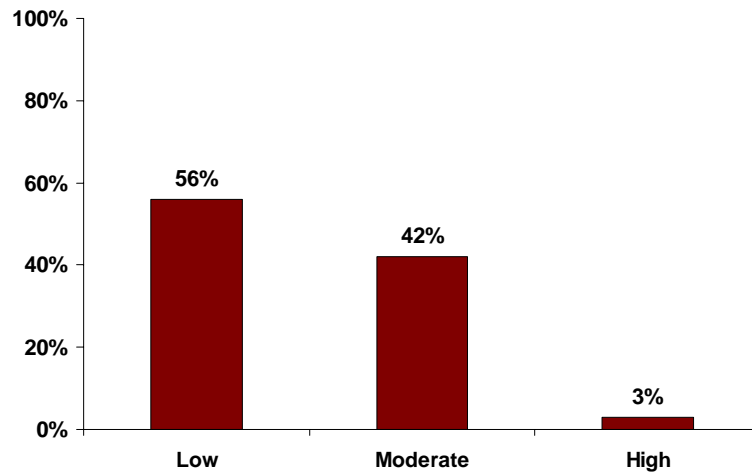




Expected Level of Difficulty in College: Paying for college expenses

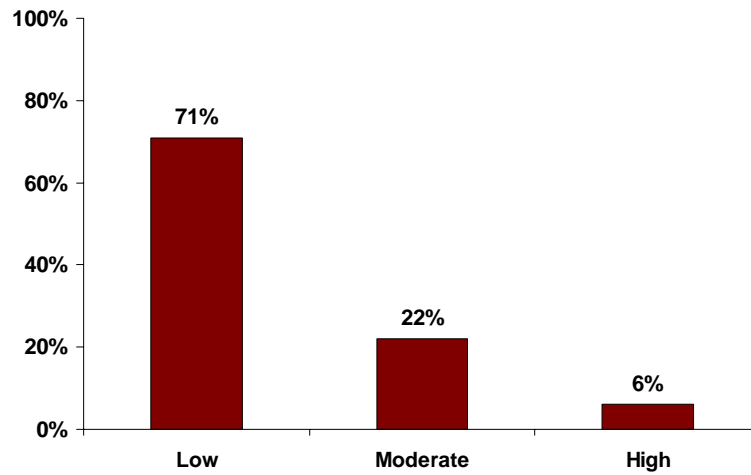


Expected Level of Difficulty in College: Getting help with school work





Expected Level of Difficulty in College: Making new friends



Importance of Academic Effort

How important is it to you that you do the following at this college during the coming school year?	Very Important or Important
Ask questions in class or contribute to class discussions	53%
Put together ideas or concepts from different courses when completing assignments or during class discussions	32%
Prepare two or more drafts of a paper before turning it in	30%
Work on a paper or project that requires integrating ideas or information from various sources	27%
Make a class presentation	17%



Importance of Faculty Interaction

How important is it to you that you do the following at this college during the coming school year?	Very Important or Important
Use email to communicate with an instructor	70%
Work harder than you think you can to meet an instructor's standards or expectations	68%
Discuss grades or assignments with an instructor	63%
Receive prompt feedback from faculty on your academic performances (written or oral)	62%
Talk about career plans with a faculty member or advisor	58%
Discuss ideas from your readings or classes with faculty members outside of class	25%



Importance of Diverse Perspectives

How important is it to you that you do the following at this college during the coming school year?	Very Important or Important
Learn something that changes the way that you understand an issue or concept	51%
Examine the strengths and weaknesses of your own views on a topic or issue	41%
Try to better understand someone else's views by imagining how an issue looks from his or her perspective	41%
Have serious conversations with students of a different race or ethnicity than your own	25%
Have serious conversations with students who are very different from you in terms of their religious beliefs, political opinions, or personal values	25%

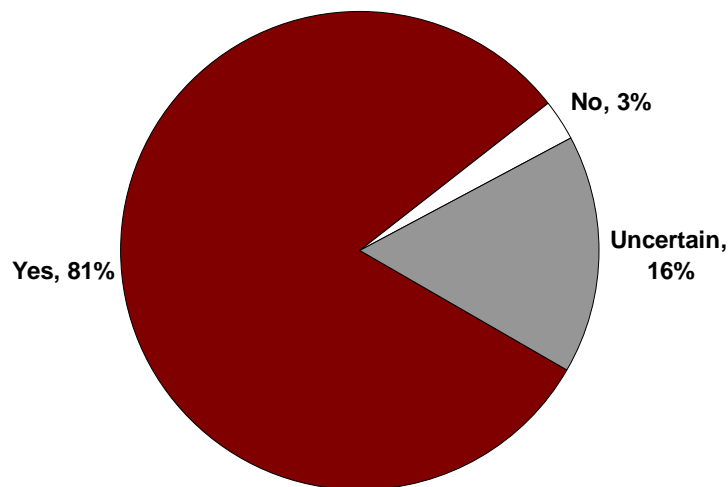


Importance of Academic and Social Support

How important is it to you that your college emphasize each of the following?	Very Important or Important
Providing the support you need to help you succeed academically	66%
Using computers in academic work	49%
Spending significant amounts of time studying and on academic work	43%
Encouraging contact among students from different economic, social, and racial or ethnic backgrounds	37%
Attending campus events and activities	32%
Helping you cope with your non-academic responsibilities (work, family, etc.)	26%
Providing the support you need to thrive socially	26%



Do you intend to graduate from this college?





Concluding Questions

- What was surprising?
- What was worrisome?
- What are some specific ways that we can use this information to improve the Morningside experience?

